

TURF TRANSPORTATION / DEATH OF GRASS (2009)

This project is based with in notions of the John Christopher's 1956 science fiction novel *The Death of Grass*. Less concerned with the post apocalypse projection of the novel, *Turf Transportation (2009 – ongoing)* is surrounded within the idea of controlled preservation and exhibition.

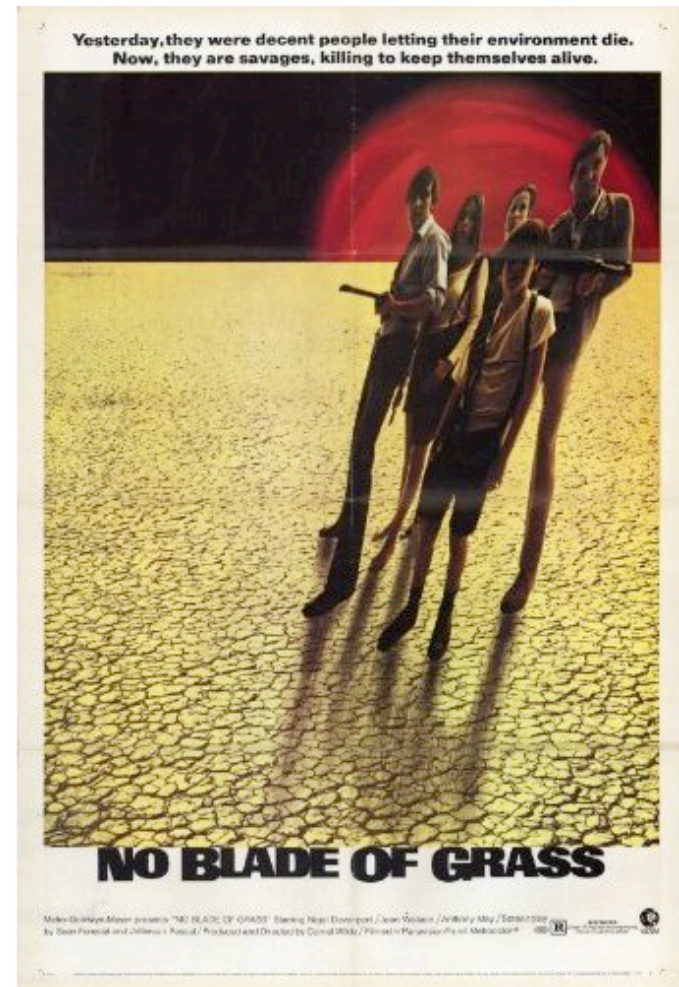
Incorporating a series of seminars, which use the original film adaptation of *The Death of Grass, No Blade of Grass (1970)* *Turf Transportation* aims to educate as well as producing a device that is capable of preserving single sample of grass. The samples are to be of royal decent, that is to say, the grass will have a connection to the British Monarchy be it through name, location of growth or similar.

The project, which is still in production, will culminate in the construction of eight cabinets each capable of preserving a single sample of grass, one sample from each of the Royal Parks of London.

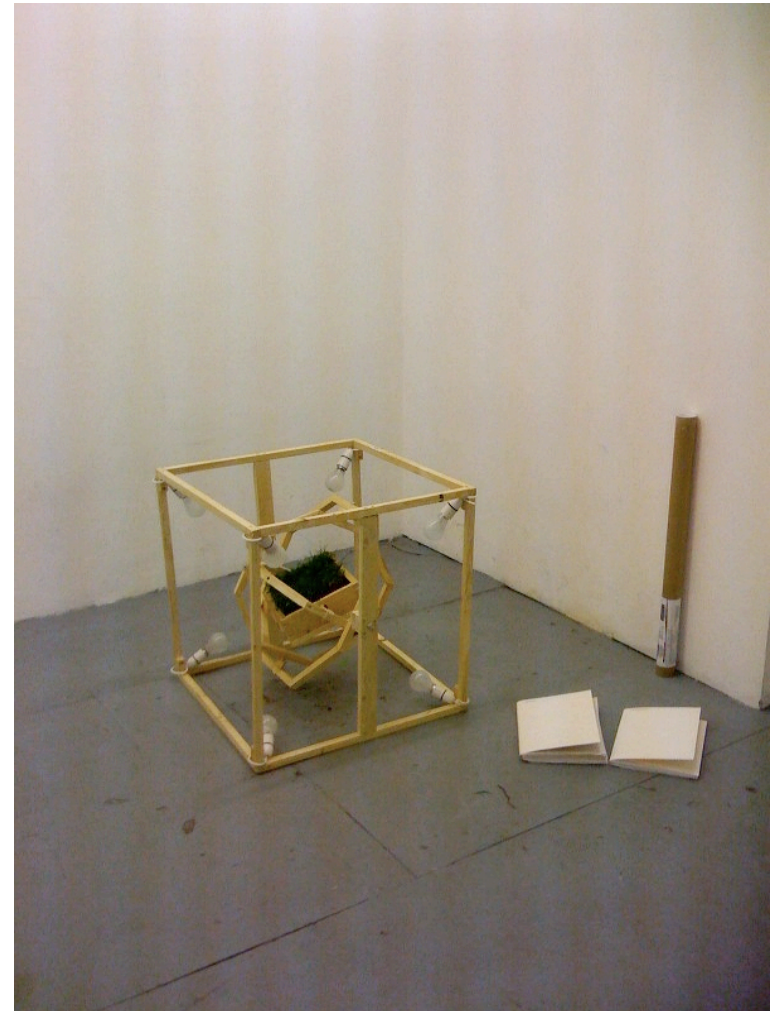
These cabinets will then be transported together away from their origin to be paraded in a similar manner to a travelling botanical garden or freak show.



PROTOTYPE 0.1
TURF TRANSPORTATION / DEATH OF GRASS
Turf, 40 watt bulb, Light socket
(March 2009)

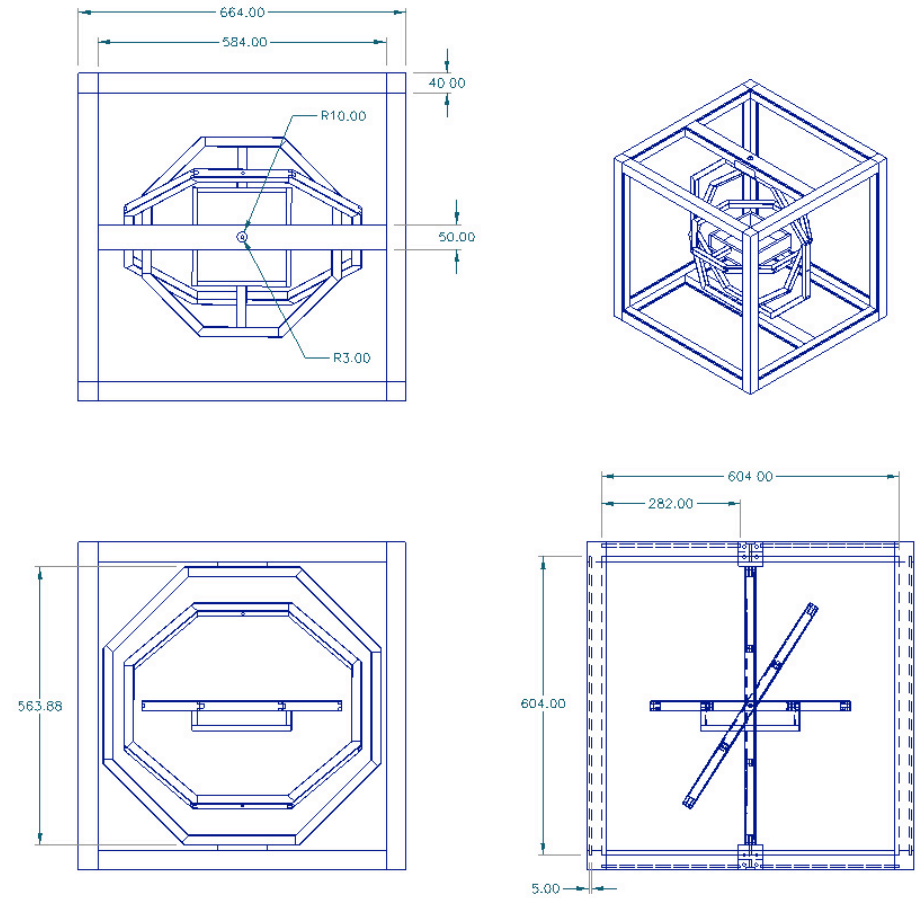


**SEMINAR ONE : TRIANGLE OF U / SVALBARD
TURF TRANSPORTATION / DEATH OF GRASS**
*1970 Film Poster 'No Blade of Grass', audience and artist discussion
(March 2009)*



PROTOTYPE 1.1 / REGENTS ROW E8
TURF TRANSPORTATION / DEATH OF GRASS

*Turf from the 'Regent's Canal', wood, 40 watt bulbs, light sockets, documentation files
(March 2009)*



ENGINEERING DRAWINGS FOR PROTOTYPE 1.2
TURF TRANSPORTATION / DEATH OF GRASS

Ink on paper, one of 14
(April / May 2009)



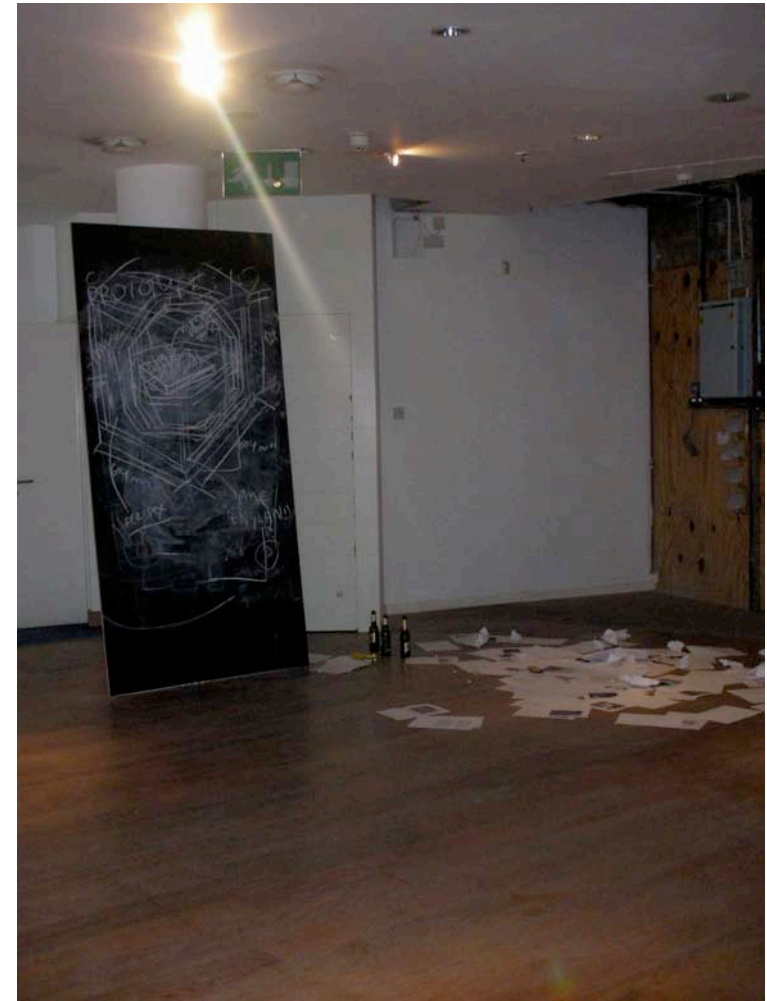
PROTOTYPE 1.2 / VICTORIA PARK E9 / KREUZBERG BERLIN
TURF TRANSPORTATION / DEATH OF GRASS

*Turf from Victoria Park, Transported to Kreuzberg Germany, Installation view, wood, perspex
(August 2009)*



PROTOTYPE 1.2 / 849015208721527
TURF TRANSPORTATION / DEATH OF GRASS

*Turf from Victoria Park London, Transported to Kreuzberg, Germany, to Bethnal Green London, Installation view, wood, perspex
(September 2009)*



SEMINAR TWO : TRIANGLE OF U / KWAKWAKA'WAKA
TURF TRANSPORTATION / DEATH OF GRASS
Three-hour seminar, blackboard, chalk, research papers
(October 2009)
